



ESL/ASEPTIC INNOVATION SOLUTIONS:

THERMA-SURGE, THERMA-ROUTE, MIX & BLEND

The New Era in ESL/Aseptic Processing

S&P
SYSTEMS &
PROCESS

OPTIMIZE PRODUCTION EFFICIENCY

THERMA-SURGE

> Three Zone Approach

Utilizing full-port double block-and-bleed protection with critical thermal guards and valve position feedback

> System Independence

Complete independence of CIP, AIC, sterilization and production from the source system and tank destinations

> State of the Art CIP

All product valves lifted during CIP for thorough cleaning *every* time you CIP

> Optical Phase Detection

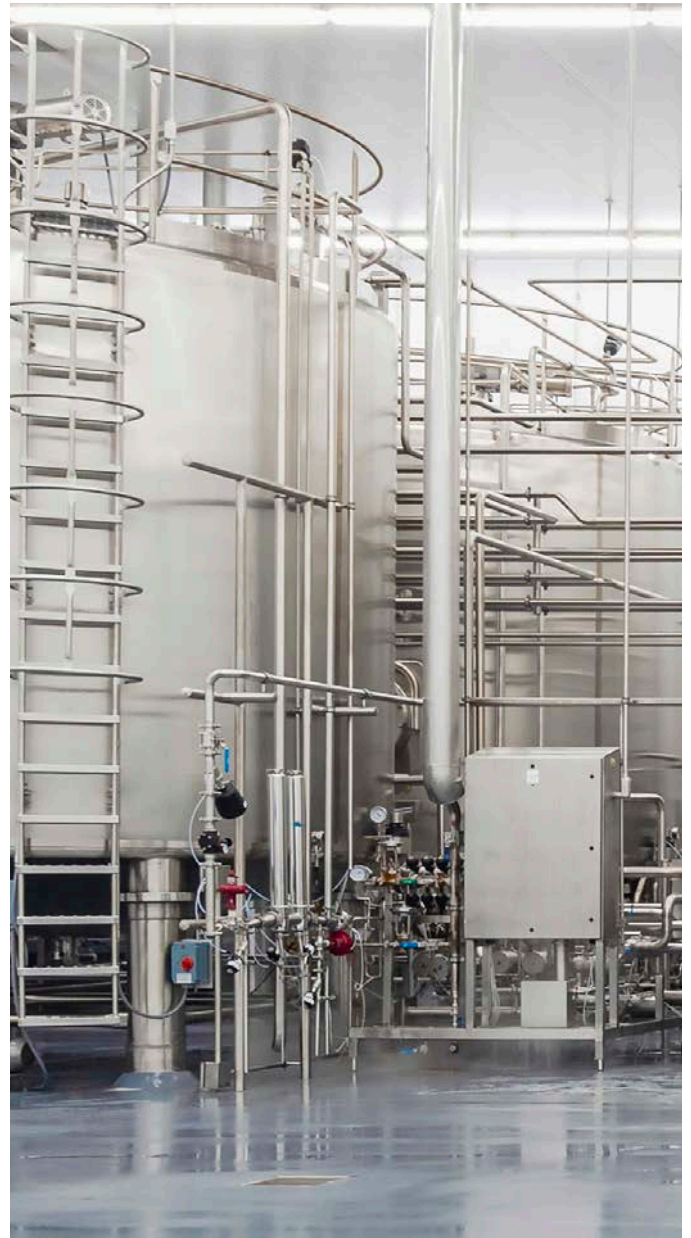
Optical (NIR) phase detection reduces product loss and increases efficiency

> Side Inlet Valves

Side inlet valves allow fillers to continue to pull product from the surge tanks when systems transition from product-to-water or water-to-product

> Reduced Water Usage

Cooling water recirculated through outer tank jacket reduces water usage



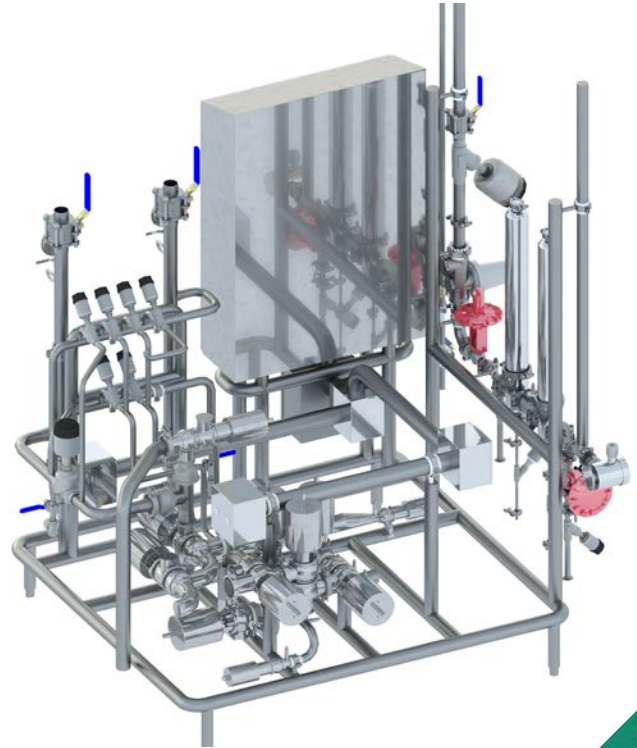
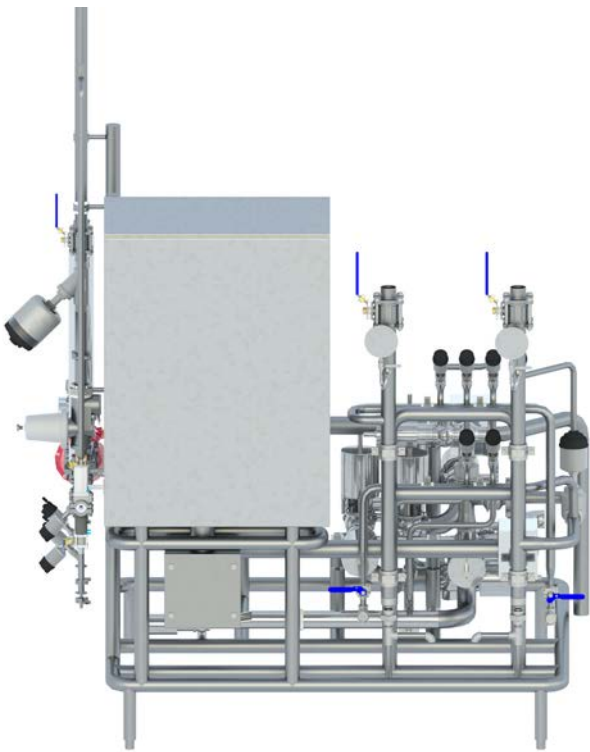
Statco-DSI's Therma-Surge and Therma-Surge+ valve solutions allow for independent surge tank operation between UHT sources and filler destinations.

This unique approach delivers optimum production efficiency and enables full, unencumbered utilization of all associated upstream and downstream assets. Quality is ensured because all valves in the product pathway are pulsed during cleaning (CIP)—which completely and thoroughly mitigates any potential residual product, contaminants, or allergens.

The Therma-Surge+ 5-zone design provides **complete routing flexibility** between **multiple UHT processors** and common surge tanks



THERMA-SURGE+



 **STATCO-DSI™**



SEAMLESS ROUTING FLEXIBILITY

THERMA-ROUTE+

Multi-zone design delivers complete routing flexibility between multiple surge tanks and multiple fillers.

> Seamless Product Routing

Complete independence from the ESL/Aseptic surge tank and filler for CIP, sterilization, and production utilizing full-port double block-and-bleed protection.

> State of the Art CIP

All product valves lifted during CIP for thorough cleaning, completely mitigating risk of residual product, contaminants, and allergens.

> Modular, Easily Expandable Valve Configurations

Therma-Route+ valve groups are capable of growing along with your facility's production demands.

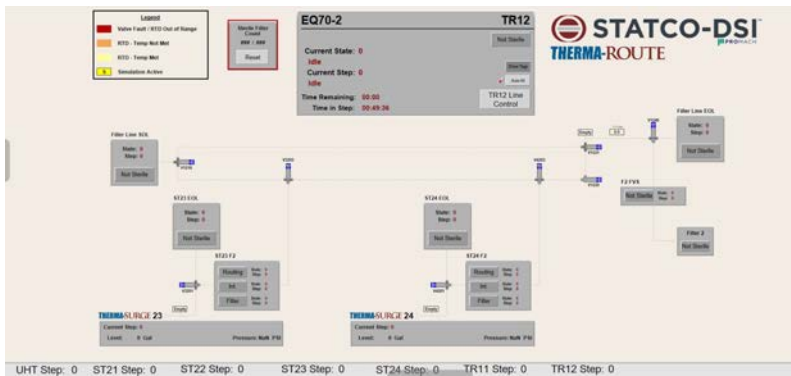
> Sustainability

Our unique Start-of-Line valve solution provides the ability to perform a sterile air purge post sterilization and production, thus mitigating residual steam condensate, adverse thermal affects (line cooling), and final product line volume respectively.





THERMA-ROUTE+



Statco-DSI's Therma-Surge+ and Therma-Route+ deliver assured product integrity—from processing through filling.



INNOVATIVE BLENDING TECHNOLOGY

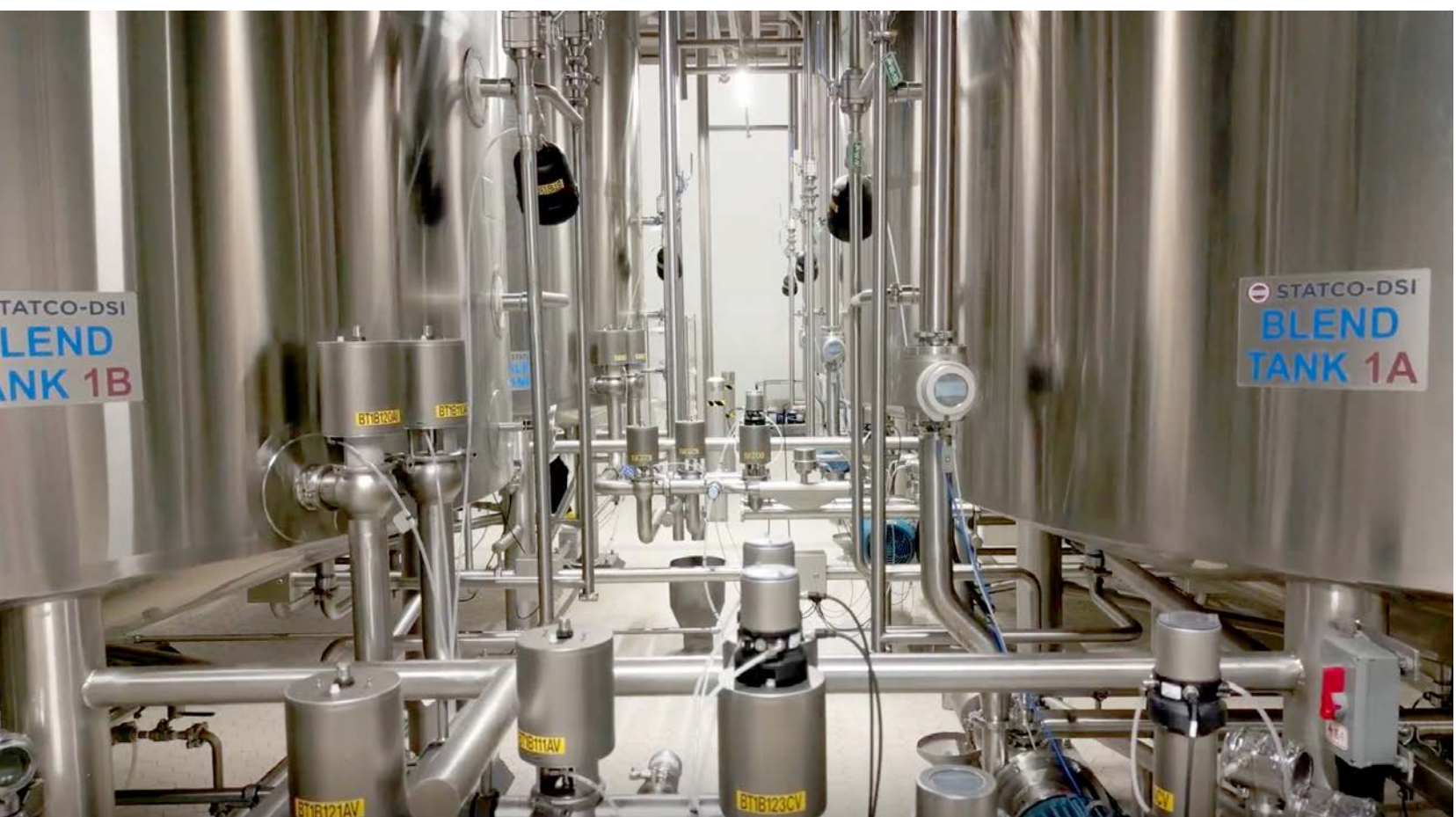
MIX&BLEND

Statco-DSI's Mix and Blend systems are designed to incorporate your full range of recipes...and more!

Our automated approach to batching leverages metered deliveries of up to three liquid ingredients seamlessly and simultaneously—significantly reducing batching times while maintaining product quality and consistency.

Whether your recipes are dairy-based, plant-based, or both, or whether your dry ingredient additions are via bags, supersacks, totes, or drumsour systems are capable of efficiently producing a vast range of products with ease and efficiency. Each system is tailor-made to include any or all of the following features:





- Seamless back-to-back transfers with one batch tank building a batch while the other is in active transfer to destination
- Independent heating and cooling paths to suit specific batching needs
- Surge-Standardization capable of continuous production of standardized milks (1%, 2%, 3.25%), half-n-half, or standardized cream
- Non-dairy creamer emulsions
- On-demand hot water for batch formulation tank flushes and path flushes
- Mix-proof valve solutions to ensure seamless tank and pathway cleanability independently of active production
- Intuitive interface for easy recipe editing and additions

We are here for you

24-Hour Customer Service

- Experienced Technicians
- Reduced Downtime and Equipment Failures
- Prevent & Correct Problems
- Machine Analysis
- Visual Inspection for Worn and/or Broken Parts
- Machine Adjustments
- Spare Parts Inventory Evaluation
- Instrumentation Calibration



Statco-DSI was founded in 1982 by industry experts ranging in experience from factory sales managers to plant engineers, maintenance management, and operations leadership.

Over the past 40+ years, we've grown significantly through increased sales, expanded product offerings, close factory relationships, and timely business acquisitions. From 12 offices located coast-to-coast, we are recognized as the largest privately held distributor and systems integrator in the United States, with annual sales of approximately \$300+ million.

STATCO-DSI
ESL/ASEPTIC CENTER OF EXCELLENCE
675 Mitchell Avenue
Woodland, WA 98674
360-727-6837
Statco-DSI.com